

PATCH CABLE

CAT6 Patch Cable



Features

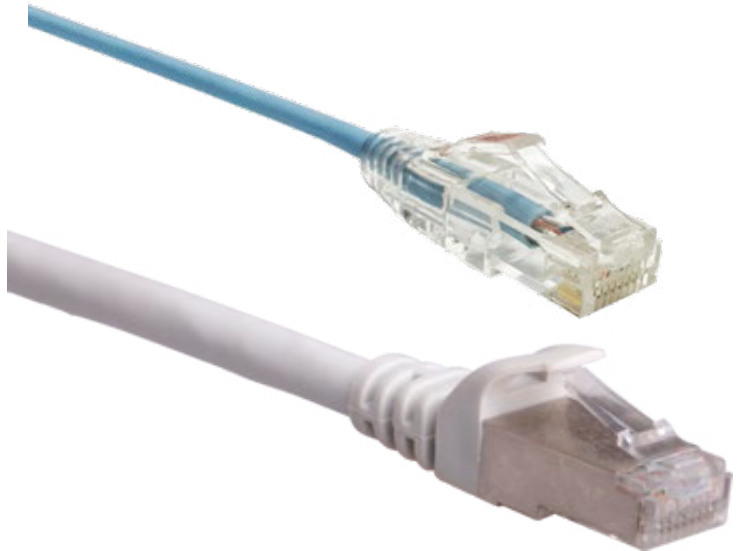
- Standard 24 AWG
- We can also provide 26AWG to 28 AWG
- Easy to install and use
- Passing cable bending tests

Compliant:

- ANSI/TIA-568-C.2 6
- ISO/IEC 11801 Class E

Material

- RJ-45 Connectors
- Get the metal touch points gilded
- 750 Mating cycles
- The jacket can be PVC or LSZH
- All materials are compliant with RoHS and REACH



Product Code Generator for Copper Patch Cables:

SXPC	CAT	AA	Type	BB	Length	CCC	Jacket	D	Color	EE
	5e	5E	U/UTP	UU	30 cm	30C	PVC	A	Gray	01
	6	06	F/UTP	FU	50 cm	50C	LSZH	B	Purple	02
	6A	6A	SF/UTP	SU	1 m	01M			Blue	03
	7	07	U/FTP	UF	2 m	02M			Green	04
	7A	7A	F/FTP	FF	3 m	03M			Yellow	05
	8	08	S/FTP	SF	5 m	05M			Orange	06
					10 m	10M			Red	07
					15 m	15M			White	08
					20 m	20M			Black	09

Product Code Format: SXPC-AA-BB-CCC-D-EE

Example:

Cat6, U/UTP, 3 m, LSZH, Gray

Product Code: SXC-06-UU-03M-B-01