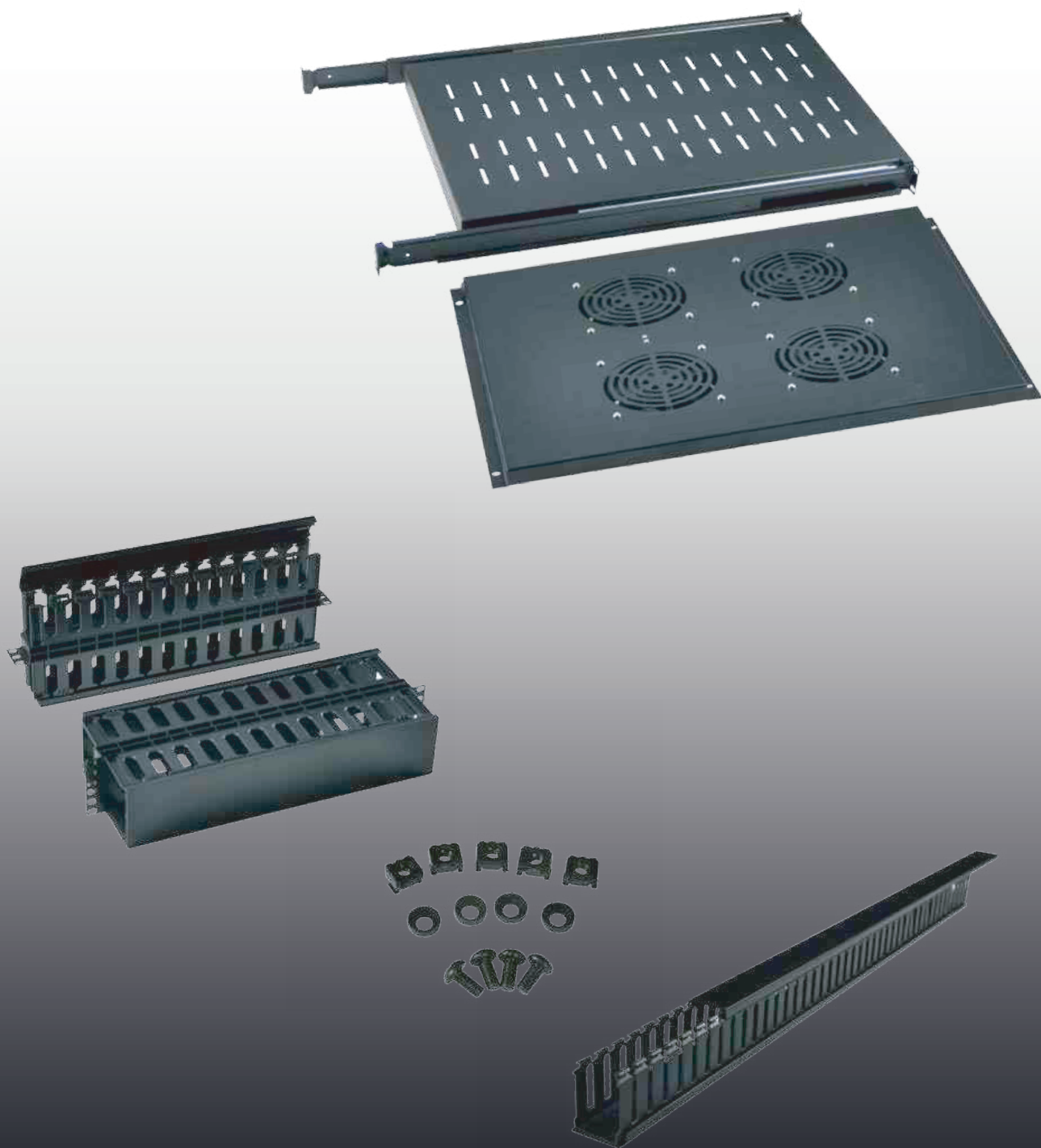


RACK ACCESSORIES

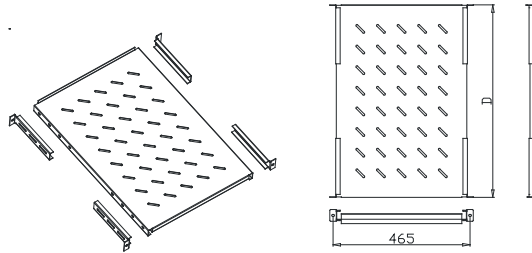
Stecmax provides you varieties of accessories, which are compatible with the leading brands of racks, cabinets in the market.



■ Rack Shelves

Easy-to-install vented 19" shelf mounts easily with screws onto rack rails of IT equipment.

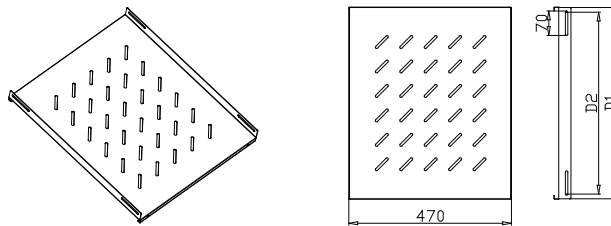
Fixed Shelf



Features

- Four mounting ears depth adjustable fixed shelf.
- Material:SPCC.
- Load capacity:45kgs.
- Color:RAL9005(Black).

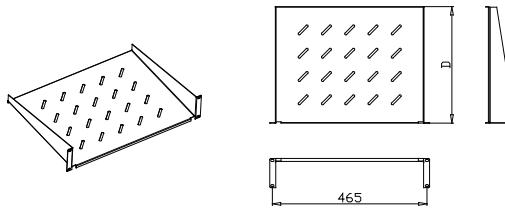
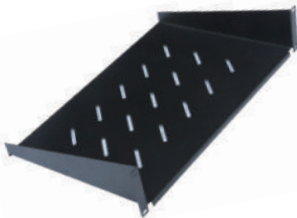
Model	Dimension W*D*H(mm)	Installation Size(mm)	Application
SX-AFSHELF-350	483*350*43	465	600mm depth ASK/ASP rack
SX-AFSHELF-550	483*550*43	465	800mm depth ASK/ASP rack
SX-AFSHELF-650	483*650*43	465	1000mm depth ASK/ASP rack
SX-AFSHELF-750	483*750*43	465	1100/1200mm depth ASK/ASP rack



Features

- Four mounting holes fixed shelf.
- Material:SPCC.
- Load capacity:20kgs.
- Color:RAL9005(Black).

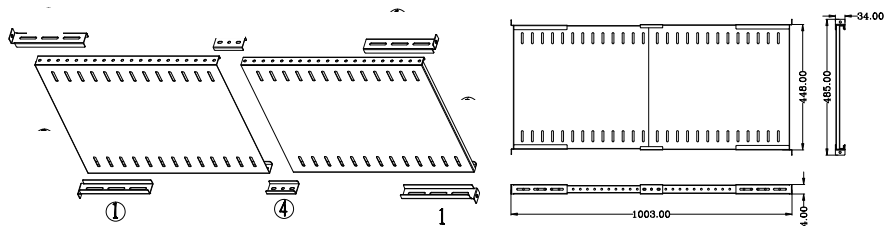
Model	Dimension W*D*H(mm)	Installation Size(mm)	Application
SX-SHELF4P-350	470*350*48	470	600mm depth ASP rack
SX-SHELF4P-550	470*550*48	470	800mm depth ASP rack
SX-SHELF4P-650	470*650*48	470	1000mm depth ASP rack



Features

- Two mounting ears fixed shelf.
- Material:SPCC.
- Load capacity:20kgs.
- Color:RAL9005(Black).

Model	Dimension W*D*H(mm)	Installation Size(mm)	Application
SX-2P1USHSELF-300	483*300*43	465	450mm depth wall mount cabinet, 2-post open frame rack
SX-2P1USHSELF-350	483*350*43	465	450mm depth wall mount cabinet, 2-post open frame rack
SX-2P2USHSELF-300	483*300*88	465	450mm depth wall mount cabinet, 2-post open frame rack
SX-2P2USHSELF-350	483*350*88	465	450mm depth wall mount cabinet, 2-post open frame rack

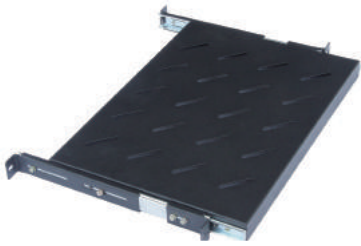


Features

- Four mounting ears fixed shelf.
- Material:SPCC.
- Depth can be adjustable from 22" to 40".
- Color:RAL9005(Black).

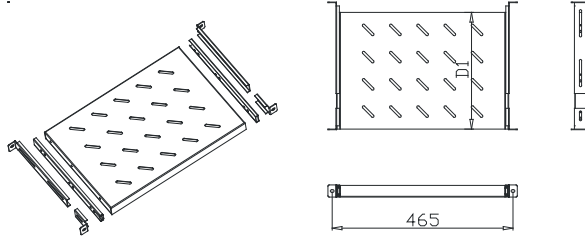
Model	Dimension W*D*H(mm)	Installation Size(mm)	Application
SX-AFSHELF4POST	485*(558.8~1023)*34	465	22"-40" depth 4-post open frame rack

Sliding Shelf



Features

- Four mounting ears sliding shelf.
- Material:SPCC.
- Load capacity:35kgs.
- Color:RAL9005(Black).

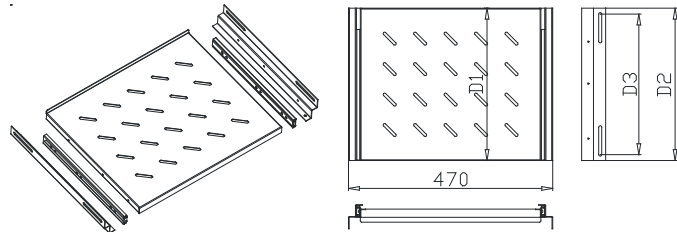


Model	Dimension W*D*H(mm)	Installation Size(mm)	Application
SX-ASSHELF-350	483*350*43	465	600mm depth ASK/ASP rack
SX-ASSHELF-550	483*550*43	465	800mm depth ASK/ASP rack
SX-ASSHELF-650	483*650*43	465	1000mm depth ASK/ASP rack



Features

- Four mounting holes sliding shelf.
- Material:SPCC.
- Load capacity:30kgs.
- Color:RAL9005(Black).

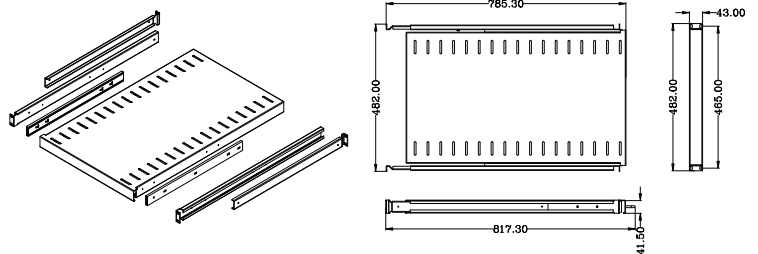


Model	Dimension W*D*H(mm)	Installation Size(mm)	Application
SX-ASSHELF-350	470*350*53	470	600mm depth ASP rack
SX-ASSHELF-550	470*550*53	470	800mm depth ASP rack
SX-ASSHELF-650	483*650*53	470	1000mm depth ASP rack



Features

- Four mounting holes sliding shelf.
- Material:SPCC.
- Load capacity:35kgs.
- Color:RAL9005(Black).

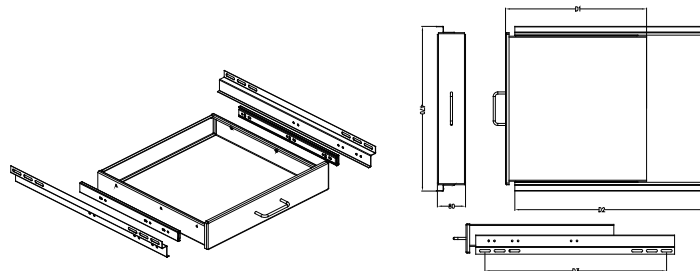


Model	Dimension W*D*H(mm)	Installation Size(mm)	Application
SX-SHELFASK-350	483*350*43	465	600mm depth ASK rack
SX-SHELFASK-550	483*550*43	465	800mm depth ASK rack
SX-SHELFASK-650	483*650*43	465	1000mm depth ASK rack
SX-SHELFASK-750	483*750*43	465	1100mm/1200mm depth ASK rack



Features

- Sliding drawer for network rack.
- Material:SPCC.
- Load capacity:30kgs.
- Color:RAL9005(Black).

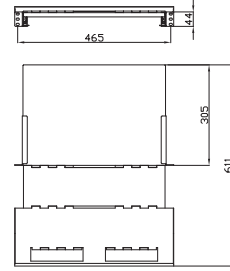
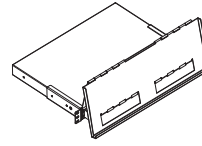
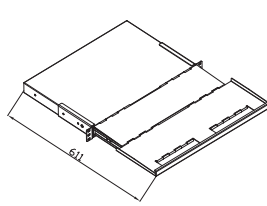


Model	Dimension W*D*H(mm)	Installation Size(mm)	Application
SX-SDRAWER-650	470*650	470	1000mm depth ASP rack



Features

- Sliding drawer for network rack.
- Material:SPCC.
- Load capacity:30kgs.
- Color:RAL9005(Black).



Model	Dimension W*D*H(mm)	Installation Size(mm)	Application
SX-SSSHELF	465*44*611	470	1000mm depth ASP rack

■ Cable Management

For routing and bundling cable on standard 19" rack, makes a complete cable mangement system when used with vertical and horizontal cable managers.

Horizontal Cable Manager

Metal Horizontal Cable Manager

Features

- Mounts horizontally on standard 19" cabinet.
- Material:SPCC.
- Color:RAL9005(Black).

Model	Dimension W*D*H(mm)	Installation Size(mm)
SX-ASMCM1U	483*42*70	465
SX-ASMCM2U	483*88*70	465

Plastic Cable Manager



Features

- Mounts horizontally on standard 19" cabinet.
- Material:Plastic and SPCC.
- Color:RAL9005(Black).

Model	Dimension W*D*H(mm)	Installation Size(mm)
SX-ASPCD1U	483*42*60	465
SX-ASPCD2U	483*88*60	465

Metal Horizontal Cable Ring



Features

- Mounts horizontally on standard 19" cabinet.
- Material:SPCC.
- Color:RAL9005(Black).

Model	Dimension W*D*H(mm)	Installation Size(mm)
SX-ASMCR1U	483*42*70	465
SX-ASMCR2U	483*88*70	465

Plastic Horizontal Cable Ring



Features

- Mounts horizontally on standard 19" cabinet.
- Material:Plastic and SPCC.
- Color:RAL9005(Black).

Model	Dimension W*D*H(mm)	Installation Size(mm)
SX-ASPCABLERING1U	483*42*80	465
SX-ASPCABLERING2U	483*88*80	465

High-density Cable Manager



Features

- Supply high-performance cable manager for cable and fiber patch cord.
- Can open the cover from double sides through snap hinges easily.
- Material:SPCC+Plastic.
- Color:RAL9005(Black).

Model	Dimension W*D*H(mm)	Installation Size(mm)
SX-CABLEMNRHD1U	483*42*92	465
SX-CABLEMNRHD2U	483*88*92	465

Double Sides Plastic Cable Manager



Features

- Double sides plastic cable manager.
- Mounting horizontally on standard 19" cabinet.
- Material:fully plastic.
- Color: RAL9005(Black).

Model	Dimension W*D*H(mm)	Installation Size(mm)
SX-DSFPCD1U	483*175*48	465
SX-DSFPCD2U	483*175*92	465

Vertical Cable Manager



Features

- Toolless mounting vertically with plastic mounting buttons.
- Material: SPCC and plastic cable rings.
- 2pcs one set.
- Color: RAL9005(Black).

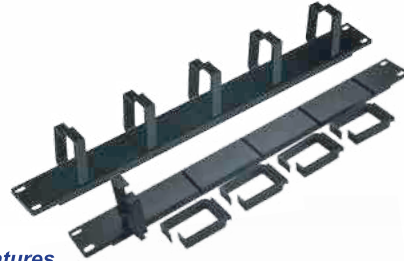
Model	Dimension W*D*H(mm)	Application
SX-PCR1UVRT	45*95*860	Vertical tool-less mounting
SX-PCR2UVRT	88*98*860	Vertical tool-less mounting

Features

- Toolless mounting vertically with plastic mounting buttons.
- Material: SPCC and plastic cable tray.
- 2pcs one set.
- Color: RAL9005(Black).

Model	Dimension W*D*H(mm)	Application
SX-PCD1UVRT	45*70*860	Vertical tool-less mounting
SX-PCD2UVRT	88*70*860	Vertical tool-less mounting

Knock down Cable Ring



Features

- Mounting horizontally on standard 19" cabinet.
- Material:fully plastic.
- Can knock down packing.
- Remove the rings can use as blank panel.
- Color:RAL9005(Black).

Model	Dimension W*D*H(mm)	Installation Size(mm)
SX-KDCABLERING1U	483*42*70	465

Single Side Plastic Cable Manager

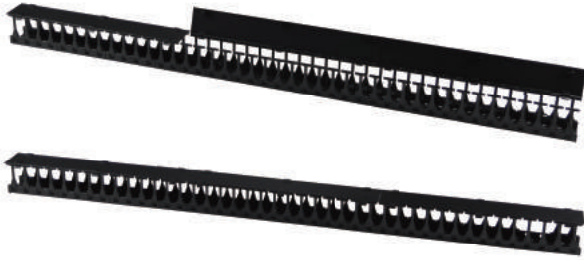


Features

- Single sides plastic cable manager.
- Mounting horizontally on standard 19" cabinet.
- Material:fully plastic.
- Color: RAL9005(Black).

Model	Dimension W*D*H(mm)	Installation Size(mm)
SX-FPCD1U	483*85*48	465
SX-FPCD2U	483*85*92	465

Vertical Cable Manager



Features

- Designed for wide rack.
- Easy removable and completed front cover.
- With plastic cable fingers provides high-density cabling system.
- Different height accept customized.
- Material: SPCC and plastic cable fingers.
- Color: RAL9005(Black).

Model	Height (U)	Application
SX-KVCM24U	24	Vertical cabling for 24U ASK rack
SX-KVCM42U	42	Vertical cabling for 42U ASK rack
SX-KVCM48U	48	Vertical cabling for 48U ASK rack



Features

- Designed for management of cable smoothing.
- Easy removable standard front cover provides cable access and management.
- Material: SPCC and plastic cable rings.
- Color: RAL9005(Black).

Model	Height (U)	Application
SX-CABLEMNVRT27-ASP	27	Vertical cabling for 27U ASP rack
SX-CABLEMNVRT32-ASP	32	Vertical cabling for 32U ASP rack
SX-CABLEMNVRT37-ASP	37	Vertical cabling for 37U ASP rack
SX-CABLEMNVRT42-ASP	42	Vertical cabling for 42U ASP rack
SX-CABLEMNVRT47-ASP	47	Vertical cabling for 47U ASP rack



Features

- Mounting vertically on 2-post and 4-post open frame rack.
- 3", 6" and 12" wide vertical cable tray meet your different cabling requirement.
- With plastic cable finger, provide high-density cabling system.
- Material: SPCC and plastic.
- Color: RAL9005(Black).

Model	Size W*D*H(mm)	Application
SX-CTRAY3CP	98*190*622	Basic density cabling, covered partially
SX-CTRAY6CP	160*220*622	Medium density cabling, covered partially
SX-CTRAY12CP	312*220*622	High density cabling, covered partially



Features

- Mounting Vertically on 2-post and 4-post open frame rack.
- With plastic cable finger, provide high-density cabling system.
- With completed cover.
- Material: SPCC and plastic.
- Color: RAL9005(Black).

Model	Size W*D*H(mm)	Application
SX-CABLETRAY3	98*190*622	Low density cabling, covered fully
SX-CABLETRAY6	160*220*622	Medium density cabling, covered fully
SX-CABLETRAY12	312*220*622	High density cabling, covered fully

■ Cooling Solution

Heat Removal

Cooling solution accessories enhance the natural convection airflow within a cabinet when installed with standard 19" rack. It is mainly used for 19" rack-mounted equipment and data center for certain power of targeted heat.

Fan Shelf



Features

- Fan shelf with either 2 or 4 fans.
- Cable length:1.9M.
- Rated voltage:110~120V/220V~240V.
- Input frequency: 50/60HZ.
- Material:SPCC .
- Various standards of cable plugs from different countries.
- Power switch provides on-off control.
- Color:RAL9005(Black).

Model	Dimension W*D*H(mm)	Installation Size(mm)	Qty of fans
SX-FANSHELF2	483*170*44	465	2
SX-FANSHELF4	483*330*44	465	4

Fan Unit



Features

- Fan unit with 3 fans.
- Rated voltage:110~120V/220V~240V.
- Input frequency: 50/60HZ.
- Material:SPCC.
- Color:RAL9005(Black).

Model	Dimension W*D*H(mm)	Installation Size(mm)	Qty of fans
SX-ANPANEL3	483*130*44	465	3

Cooling Fan



Features

- Size: 120*120*38 mm.
- Material:Plastic+Aluminum.
- Color:RAL9005(Black).

Model	Rated Voltage	Frequency
SX-FAN110V	110~120 V	50/60HZ
SX-FAN220V	220~240 V	50/60HZ

1U Digital Temperature Unit with Cooling Fans



Features

- Adjust temperature in the cabinet by intelligent control through detector
- When the temperature in the cabinet reaching the pre-set temperature, the fans start to work until below the set temperature.
- 2-way output includes 2 meters cable with IEC 320 standard power socket.
- Color:RAL9005(Black).

Model	Dimension W*D*H(mm)	Installation Size(mm)	Qty of fans
SX-FANSHELFT2	483*140*44	465	2

Fan Tray for Stecmax ASK Series Server Rack



Features

- Fan tray with 4 or 6 fans, with mesh guard.
- Include 2 meter cable with different standards for cable plug to choose from different countries.
- Use four self-tapping screws to install on the top pane of ASK rack.
- Color:RAL9005(Black)

Model	Dimension W*D*H(mm)	Q'ty of fans	Application
SX-FANTRAY4	330*350*52	4	600/800mm depth rack
SX-FANTRAY6	560*350*52	6	1000/1100mm depth rack

Fan Tray for Stecmax ASP Series Network Rack

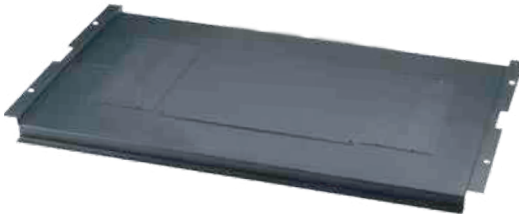


Features

- Fan tray with 2 or 4 fans, with metal cover.
- Use four self-tapping screws to install on the top panel of ASP rack.
- Color:RAL9005(Black)

Model	Dimension L*W*H(mm)	Q'ty of fans	Application
SX-ASPFANTRAY2-600	346*412*40	2	600mm depth rack
SX-ASPFANTRAY4-800	546*412*40	4	800mm depth rack
SX-ASPFANTRAY4-1000	746*412*40	4	1000mm depth rack

Bottom Plate

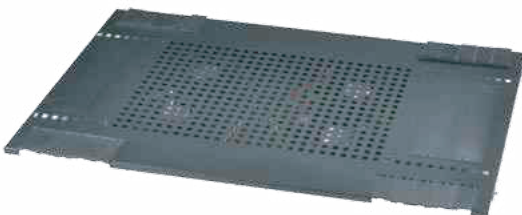


Features

- Application in Stecmax ASK series server rack.
- Includes 2pcs cable entry holes and 2pcs brushes.
- Color:RAL9005(Black)

Model	Dimension L*W(mm)	Application
SX-ASKBTP66	600*600	600mm width*600mm depth ASK rack
SX-ASKBTP68	600*800	600mm width*800mm depth ASK rack
SX-ASKBTP61	600*1000	600mm width*1000mm depth ASK rack
SX-ASKBTP88	800*800	800mm width*800mm depth ASK rack
SX-ASKBTP81	800*1000	800mm width*1000mm depth ASK rack

Fan Roof



Features

- Application in Stecmax ASK series server rack.
- Fan roof with 4 or 6 fans and ventilation hole area.
- Includes 2 round cable entry holes and 2 square cable entry holes.
- Color:RAL9005(Black).

Model	Dimension L*W(mm)	Q'ty of fans	Application
SX-FANPANEL4-66	600*600	4	600mm width*600mm depth rack
SX-FANPANEL4-68	600*800	4	600mm width*800mm depth rack
SX-FANPANEL6-61	600*1000	6	600mm width*1000mm depth rack
SX-FANPANEL6-88	800*800	6	800mm width*800mm depth rack
SX-FANPANEL6-81	800*1000	6	800mm width*1000mm depth rack

■ Air Flow Management

Air flow management accessories forces incoming cool air to pass through active components with pull fans already installed in your cabinet, helping to prevent the cool airflow to flow-out, and hold back the outside airflow to flow-in.

2U Toolless Mounting Plastic Blank Panel



Features

- Toolless snap into standard 19" cabinet.
- Logo customized
- Material: Plastic
- Color:RAL9005(Black)

Model	Dimension W*D*H(mm)	Installation Size(mm)
SX-P2UPANEL	483*86*40	465

1U Toolless Mounting Plastic Blank Panel



Features

- Toolless snap into standard 19" cabinet.
- Material: Plastic
- Color:RAL9005(Black)

Model	Dimension W*D*H(mm)	Installation Size(mm)
SX-P1UPANEL	483*42*20	465

Toolless Mounting Plastic Blank Panel



Features

- Toolless snap into standard 19" cabinet.
- Material: Plastic
- Color:RAL9005(Black)

Model	Dimension W*D*H(mm)	Installation Size(mm)
SX-MF1UPANEL	483*42*20	465
SX-MF2UPANEL	483*88*20	465
SX-MF3UPANEL	483*132*20	465
SX-MF4UPANEL	483*176*20	465

Metal Blank Panel



Features

- Metal blank panels from 1U to 4U allow you to close up unused U space.
- This forces incoming cool air to pass through active components with pull fans already installed in your cabinet.
- Material: SPCC
- Color:RAL9005(Black)

Model	Dimension W*D*H(mm)	Installation Size(mm)
SX-M1UPANEL	483*42*10	465
SX-M2UPANEL	483*88*10	465
SX-M3UPANEL	483*132*10	465
SX-M4UPANEL	483*175*10	465

Fast installation Brush Panel



Features

- Install on standard 19" cabinet.
- Include a dense brush strip and can protect cable bundles on cabinet entry
- Fast intallation
- Material: SPCC
- Color:RAL9005(Black)

Model	Dimension W*D*H(mm)	Installation Size(mm)
SX-F1UBRUSHPANEL	483*42*15	465

Brush Panel



Features

- Install on standard 19" cabinet.
- Include a dense brush strip and can protect cable bundles on cabinet entry
- Material: SPCC
- Color:RAL9005(Black)

Model	Dimension W*D*H(mm)	Installation Size(mm)
SX-UBRUSHPANEL	483*42*15	465

■ Rack Components

Lighting Panel

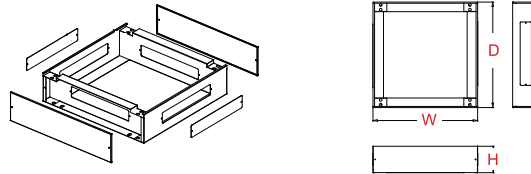


Features

- Mounting horizontally on standard 19" cabinet.
- Material:with SPCC mounting panel.
- The standard rate of lamp is 8W
- Color:RAL 9005Black

Model	Size (W*D*H mm)	Installatin Size (mm)
SX-LIGHTPANEL8W	483*60*44	465

Plinth for ASP Series Network Rack



Features

- Optional base applied for ASP series network rack, replace with levelling feet and casters.
- Material:SPCC
- Color:RAL9005(Black)

Model	Dimension W*D*H(mm)	Application
SX-BS66	600*600*150	600mm width* 600mm depth ASP rack
SX-BS68	600*800*150	600mm width* 800mm depth ASP rack
SX-BS61	600*1000*150	600mm width*1000mm depth ASP rack
SX-BS88	800*800*150	800mm width* 800mm depth ASP rack
SX-BS81	800*1000*150	800mm width*1000mm depth ASP rack

Plinth for ASK Series Server Rack



Features

- Optional base applied for ASK series server rack, replace with levelling feet and casters.
- Material:SPCC
- Color:RAL9005(Black)

Model	Dimension W*D*H(mm)	Application
SX-BASE61	600*1000*600	600mm width*1000mm depth ASK rack
SX-BASE68	600*800*600	600mm width*800mm depth ASK rack
SX-BASE66	600*600*600	600mm width*600mm depth ASK rack
SX-BASE81	800*1000*600	800mm width*1000mm depth ASK rack
SX-BASE88	800*800*600	800mm width*800mm depth ASK rack

Cage Nut



Features

- Screw packages are for mounting rack accessories and intalling rack components.
- Color: Black or Zinc color

Model	PKG.Q'ty	Description
SX-CAGENUT20	20	M6*12 cage nut
SX-CAGENUT50	50	M6*12 cage nut

Cable Entry Cover



Plastic cable entry cover

Castor



Heavy-duty castor without brake



Heavy-duty castor with brake



Leveling feet

Door Lock



Small round lock



Spring lock with the deluxe rotary handle



Advanced lock



Moon-shaped lock



3-digital code lock



Rotary lock

Cable Management Tools



Model:AS-2008
Crimping Tool 8P+6P+4P



Model:AS-2009
Crimping Tool 8P/6P/4P



Model:AS-2022
Punch Tool(110 type)



Model:AS-2020
Punch Tool



Model:AS-005
Network Cable Tester



Model:AS-018
Enhanced Network Cable
Tester & Scanner